



**Technical Specifications**

§ <b>Engine Type</b>	Air-cooled, 4-stroke, Horizontal shaft, OHV
§ <b>Number of cylinders</b>	1
§ <b>Bore x stroke</b>	65 x 54 mm
§ <b>Displacement</b>	179 cm <sup>3</sup>
§ <b>Max. power</b>	4.1 kW (5.5 hp) / 3600 rpm
§ <b>Max. torque</b>	11.0Nm (8.1 ft.lbs) / 3200 rpm
§ <b>Fuel tank capacity (litres)</b>	3.2 litres
§ <b>Oil capacity (litres)</b>	0.6 litres
§ <b>Dry weight</b>	17.5 kg
§ <b>Dimensions (L x W x H) (mm)</b>	304 x 366 x 370

**Type**

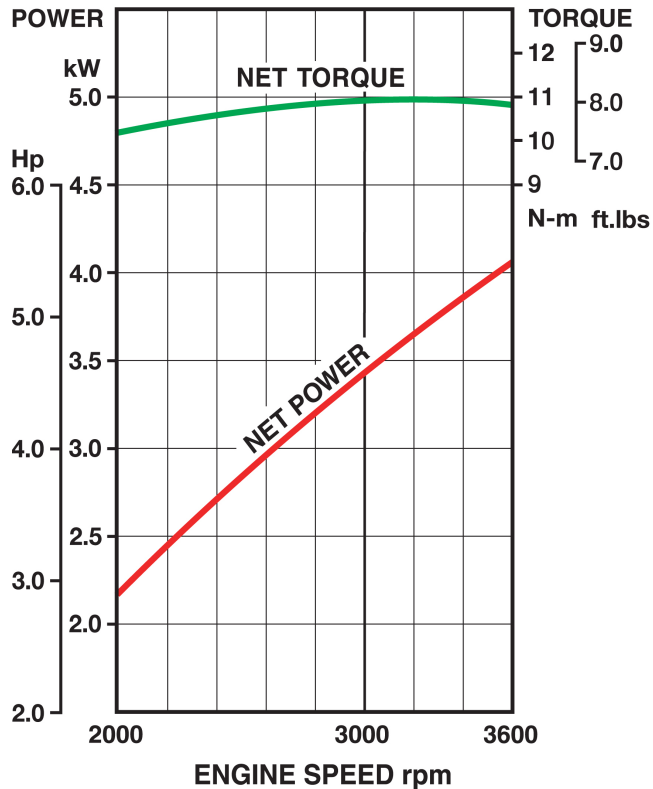
- § **4 Stroke**
- § **Air Cooled**
- § **Single Cylinder**
- § **Overhead Valve**
- § **Horizontal Shaft**

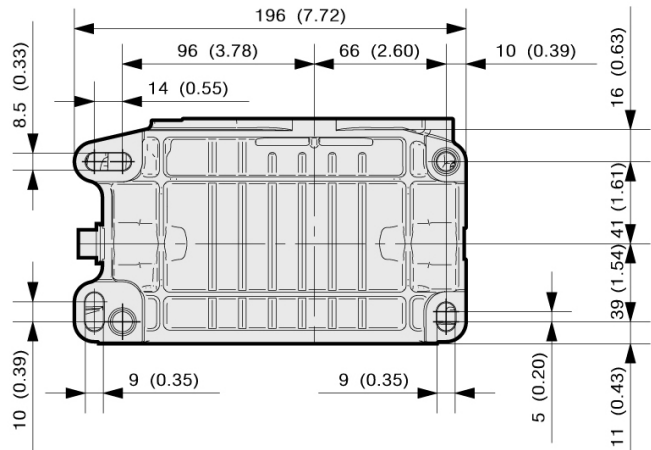
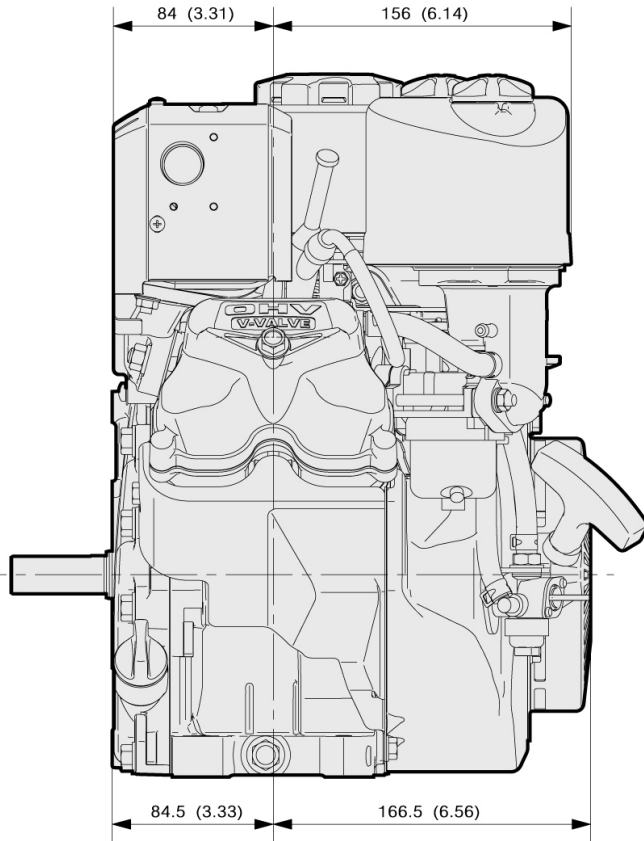
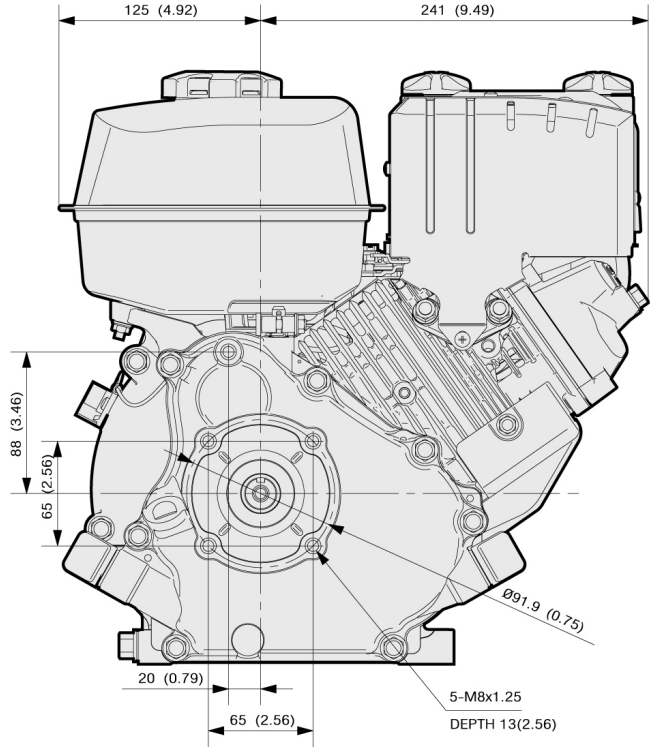
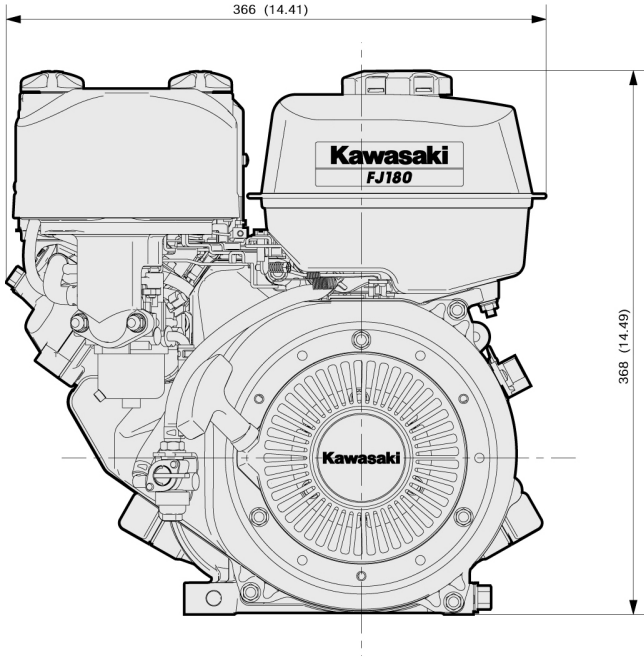
**Features**

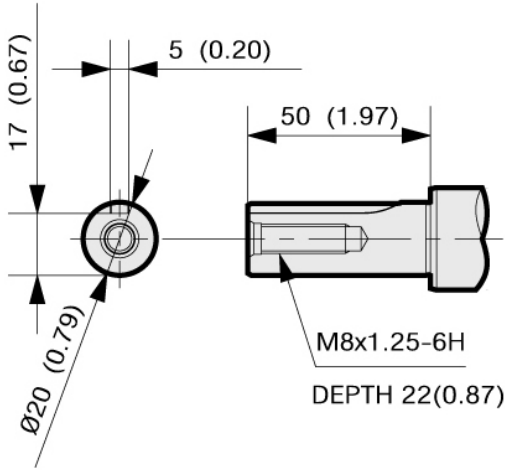
**Options**

**Performance curves**

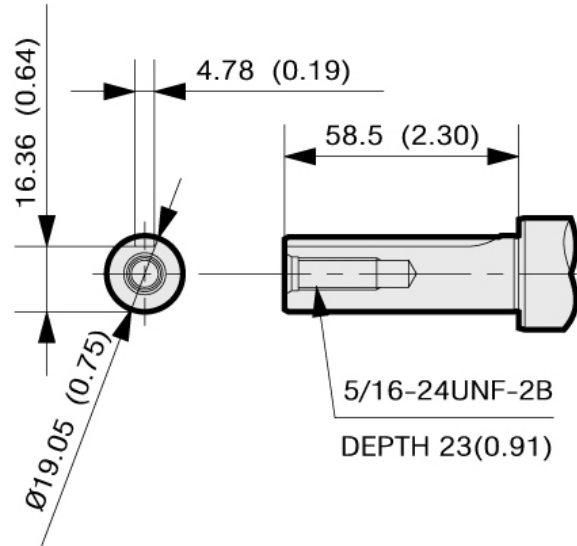
The power rating of this engine is the Net power rating tested on a production engine and measured in accordance with SAE J1349. Actual power output will vary depending on numerous factors, including, but not limited to, the operating speed of the engine in application, environmental conditions, maintenance, and other variables.



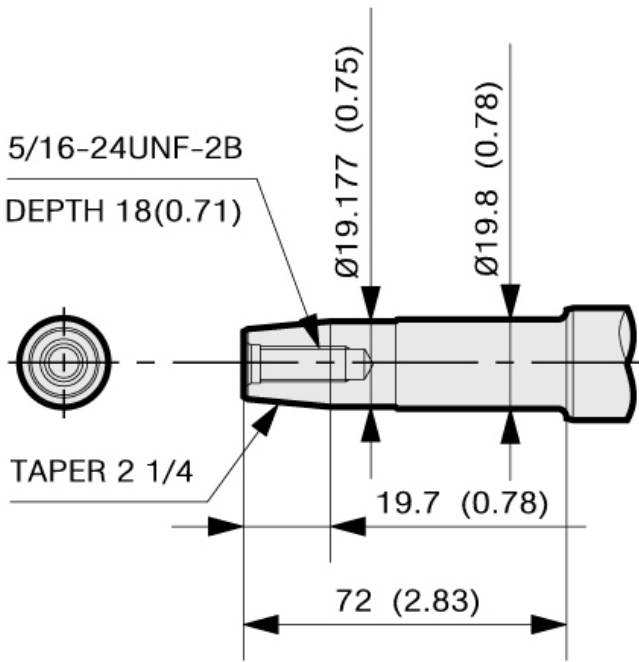




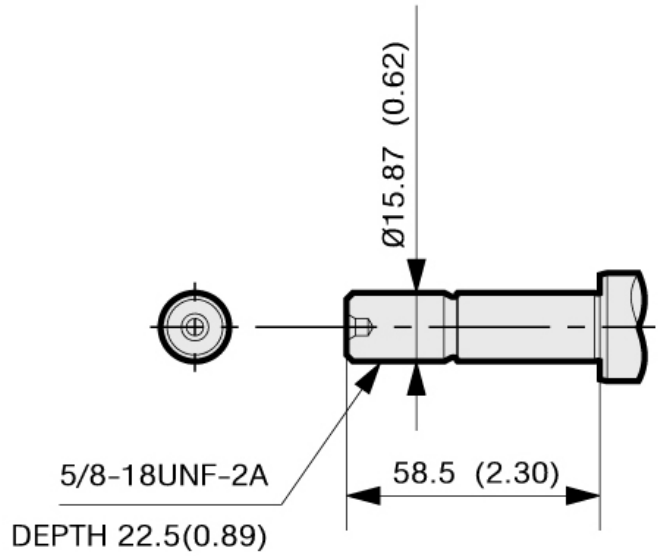
**STRAIGHT SHAFT ( METRIC )**



**STRAIGHT SHAFT ( INCH )**



**TAPERED SHAFT**



**THREADED SHAFT**